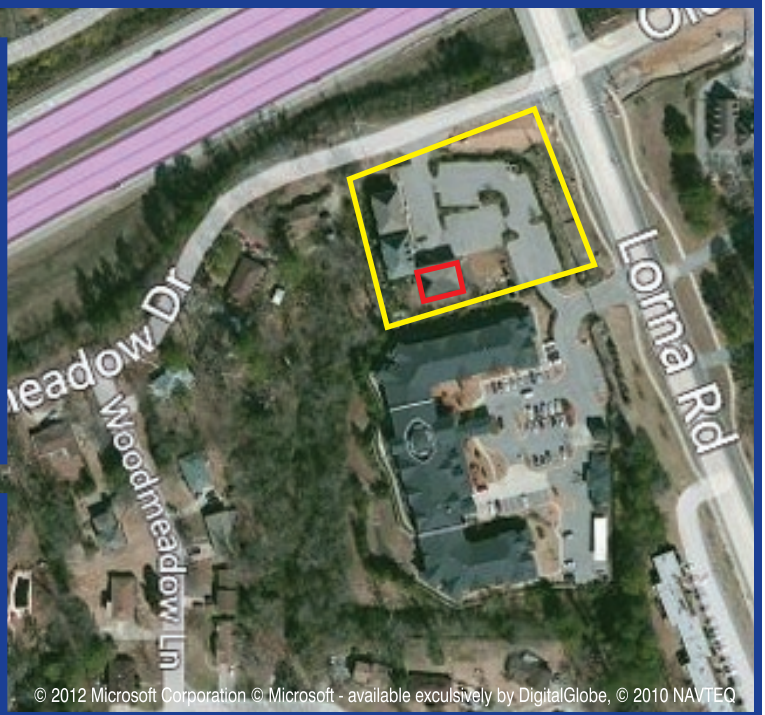
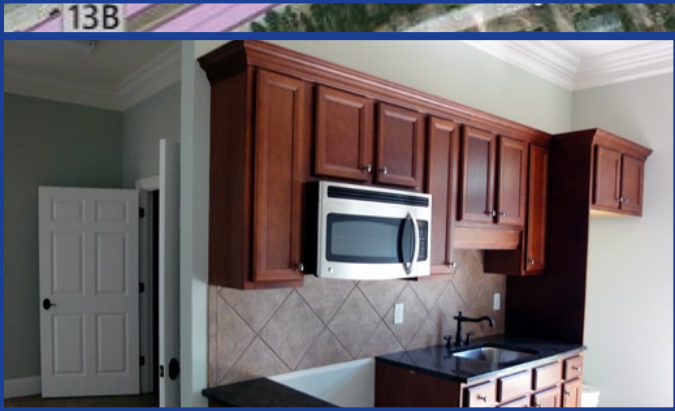


FOR SALE

RealtySouth™

2501 Twentieth Place South
Suite 400
Birmingham, Alabama 35223

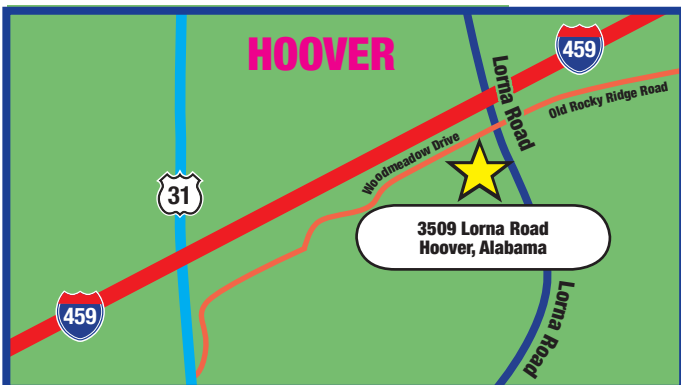
3509 Lorna Road • Hoover, Alabama 35216



© 2012 Microsoft Corporation © Microsoft - available exclusively by DigitalGlobe, © 2010 NAVTEQ

FEATURES

- 2-level office building
- Constructed 2008
- 3,978 +/- sf
- Single or dual tenancy
- Kitchen on each floor
- Fireplace on each floor
- High ceilings, crown molding
- Numerous windows
- First generation space



Commercial Sales and Leasing

MARTHA JEAN SHAW

Direct: 205.325.1324 • Office: 205.322.7500
Cell: 205.936.1926 • Fax: 205.877.6114

Email: mjshaw@realtysouth.com
Website: MarthaJeanShaw.com

~~\$500,000~~
SALES PRICE - \$435,000 Price Reduced!

This information has been secured from sources we believe to be reliable, but we make no representation or warranties, expressed or implied, as to the accuracy of the information, which may be approximate. Buyers and/or tenants should conduct their own independent investigations and rely only on those results.