

FOR SALE

US-431 • Roanoke, Alabama 36274

RealtySouth

MARTHA JEAN SHAW

**Commercial Sales
and Leasing**

2501 Twentieth Place South
Suite 400
Birmingham, Alabama 35223

Direct: 205.325.1324

Office: 205.322.7500

Cell: 205.936.1926

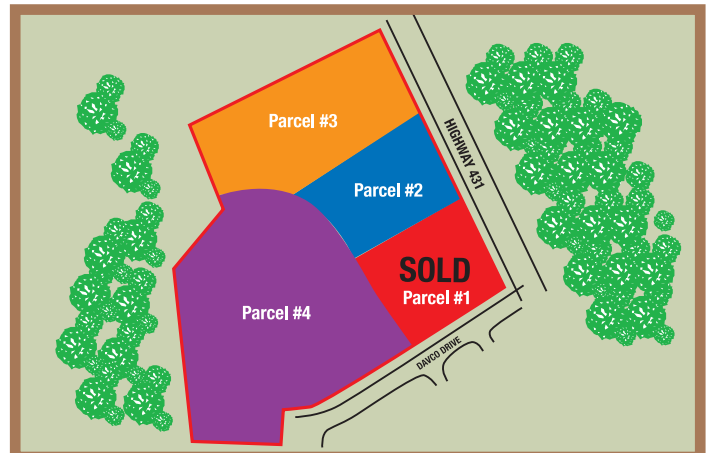
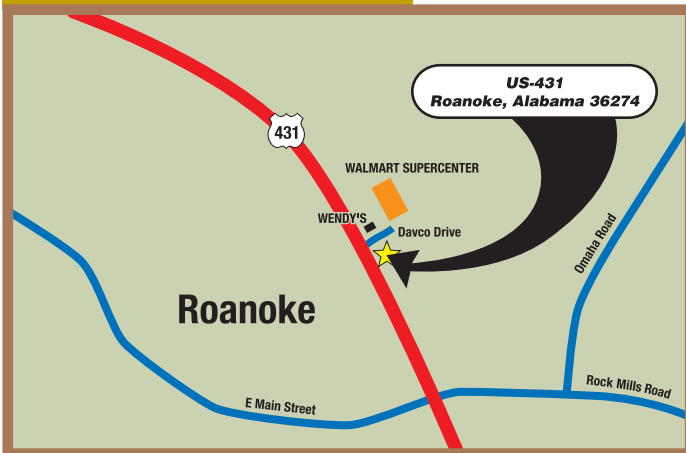
Fax: 205.325.1394

Email: mjshaw@realtysouth.com

Website: MarthaJeanShaw.com



- Great development opportunity
- Located near Lake Wedowee
- Located adjacent to WalMart Supercenter
- 19 miles to LaGrange, GA
- 45 miles to Newnan, GA
- 40 miles to Oxford, AL
- 100 miles to Atlanta, GA
- 100 miles to Montgomery, AL
- 100 miles to Birmingham, AL
- Entire Parcel- 7.93 +/- acres
Sale Price- **\$1,350,000**
- Parcel #1- **SOLD**
- Parcel #2- 1.2 +/- acres
Sale Price- **\$350,000**
- Parcel #3- 2.8 +/- acres
Sale Price- **\$550,000**
- Parcel #4- 4.18 +/- acres
Sale Price- **\$550,000**



This information has been secured from sources we believe to be reliable, but we make no representation or warranties, expressed or implied, as to the accuracy of the information, which may be approximate. Buyers and /or tenants should conduct their own independent investigations and rely only on those results.